

DIMMER-CONTROLLER

— User's Manual —



Table of Contents

Installation

- 1. Mounting the DimmerPage 2
- 2. Connecting the 0-10V InputPage 4
- 3. Connecting Power LinesPage 5

Programming

- 4. Button OverviewPage 5
- 5. Setting the Date and Time.Page 6
- 6. Setting the Lamp ProfilePage 7
- 7. Manual ModePage 8
- 8. Slave ModePage 8
- 9. Master Mode.Page 8
- 10. Setting the ModePage 13
- 11. Housewalk ModePage 14

1. Mounting the Dimmer

The LifeLamp Dimmer-Controller features a wall mounting bracket which includes 10° of tilting movement for flexible viewing. To install the dimmer using this bracket, please follow these steps:

1. Gather the following tools to use for installation:
 - a. 1 - Power screwdriver
 - b. 2 - No. 10 x 1 1/2" Screws
 - c. 1 - 1/8" drill bit
 - d. 1 - Level
 - e. 1 - Marker



2. Remove the wall mount from the back of the dimmer by removing the screw pictured below.



3. Using level, position the wall mount on the wall as desired.



4. Using the marker, make a mark on the wall indicating where the top and bottom screws will be positioned. **The front portion of the wall mount has been removed in the pictures below for visibility.**



5. Using the 1/8" drill bit and power screwdriver, drill holes on each mark made in Step 4.



1. Mounting the Dimmer (cont.)

6. Using the power screwdriver, drive one of the #10 x 1 1/2" screws into the top hole. **Do not drive the screw all the way into the wall yet!**



9. Place the dimmer with the mounting plate onto the wall mount and fasten the top screw.



7. Place the wall mount on the top screw and slide the wall mount down slightly into place.



10. Installation complete!

8. Using the power screwdriver, drive the **bottom** screw through the bottom hole in the wall mount into the bottom hole drilled in the wall. Then tighten both screws.



2. Connecting the 0-10V Input

If you plan to use an external controller, please connect the 0-10V Input Control lines by completing the following steps.

1. Feed the shielded input control lines from the LifeLamp dimmer **and** your external controller into a wire junction box or other wire containment structure.



2. The Input Control lines on the LifeLamp dimmer are designated as follows:

Wire Color	Function
Yellow	Zone 1 +
Brown	Zone 1 -
Gray	Zone 2 +
Purple	Zone 2 -

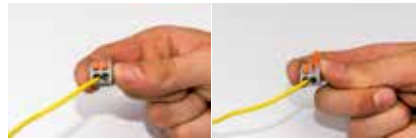


3. Strip each wire coming from your external controller about 1/4".



4. For each connection:

- a. Lift the orange lever of the empty terminal.



- b. Carefully insert the corresponding control line from your external controller into the empty terminal.



- c. Press the orange lever back down to secure the wire. **Grip the Quick Connect by the sides to avoid having your fingers pinched!**



5. Repeat this process for each connection you intend to use.

3. Connecting Power Lines

The power connections to and from the dimmer are labeled as the following. This cable should be fed into a wire junction box or wire containment structure and connected using wire nuts or another appropriate method. **Double check that these connections are correct before supplying power to the dimmer!** The high-voltage power lines are designated as follows:

Wire Color	Function
Black	Mains Line
White	Mains Neutral
Green	Earth Ground
Orange	Zone 1 +
Blue	Zone 1 -
Red	Zone 2 +
Yellow	Zone 2 -

4. Button Overview

The buttons present on the LifeLamp Dimmer-Controller are given as follows:

ENTER key

Confirms selections in menus; enters and exits Manual Mode; hold to enter Housewalk



BACK key

Cancels changes and goes backward one screen



LEFT/RIGHT arrow keys

Changes digits in Manual Mode



EXIT key

Saves changes and exits to Main Screen



UP/DOWN arrow keys

Changes selections in menus; increments/decrements digits in menus and Manual Mode



PROGRAM key

Goes to the Program Menu



POWER key

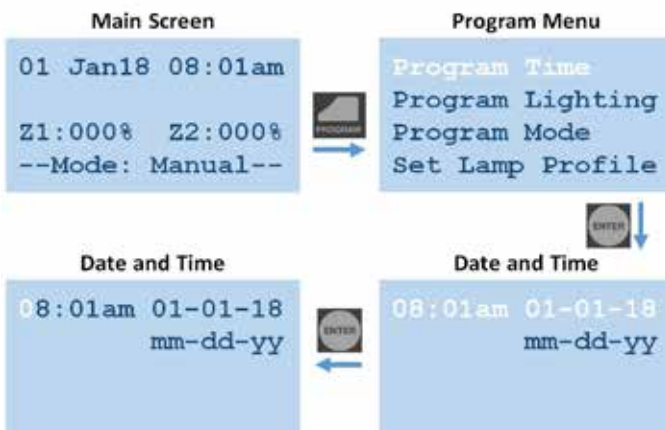
Cuts/restores power to both output Zones; turns LCD screen off/on; hold to enter Standby



5. Setting the Date and Time

Once you have supplied power to the dimmer, press the POWER key to turn on the dimmer. Then set the date and time by completing these steps.

1. Press the PROGRAM button from the **Main Screen** to go into the **Program Menu**.
2. Press the ENTER key to go into the **Date and Time** screen.
3. Press ENTER to begin setting the date and time.
4. Use the LEFT and RIGHT arrow keys to select the digit you want to change, and use the UP and DOWN arrow keys to change the selected digit.

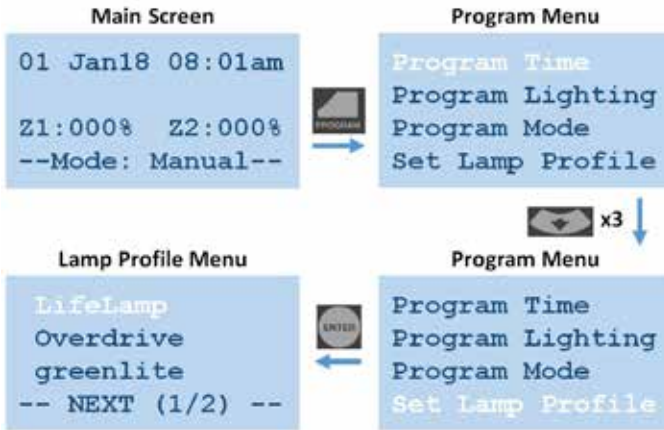


5. Press ENTER when finished.

6. Setting the Lamp Profile

If you are using LED bulbs that are not made by LifeLamp, you will need to change the dimming profile. To do this, follow these steps.

1. Press PROGRAM to go into the **Program Menu** and select **Set Lamp Profile** using the UP and DOWN arrow keys and ENTER.



2. Select the brand of LED bulb you plan to use by pressing the UP, DOWN, and ENTER keys.

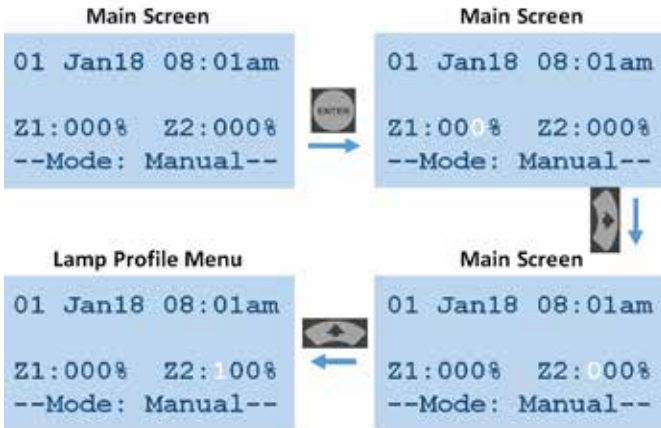
3. If you do not see the bulb brand that you will use, please select **LifeLamp**.

4. The dimmer is not compatible with compact fluorescent lights (CFL's)!

5. For incandescent lights, use the **LifeLamp** profile.

7. Manual Mode

In Manual Mode, you can change the brightness of the lights by pressing ENTER, then using the LEFT and RIGHT arrow keys to select which digit you want to change, and finally using the UP and DOWN arrows to increase or decrease that digit respectively; press ENTER again to exit.



8. Slave Mode

In Slave Mode, the LifeLamp IGBT Dimmer Controller will set the brightness of each zone according to the signal applied to the 0-10V Analog Input lines from your external light schedule controller. You can see how to set the dimmer into Slave Mode in the 'Setting the Mode' section later on.

```
01 Jan18 08:01am
See House
Controller
--Mode: Slave --
```

9. Master Mode

In Master Mode, the dimmer sets the brightness of the lights based on the schedule you set for it to follow. This schedule can be set and edited by following these steps.

1. Press PROGRAM to go into the **Program Menu** and select **Program Lighting** using the UP and DOWN arrow keys and ENTER.



2. Each Zone needs to be programmed individually and can be programmed by following these steps:
 - a. For each Zone, there can be as many as 999 *Program Days*. **Once you have programmed an entire day, you can choose to copy that *Program Day* into the next one by selecting **Keep Pre Day Pro** with the **DOWN arrow key**.** Otherwise, press ENTER to select a *Program Day*, ENTER again to begin choosing a day, then use the UP or DOWN arrow keys to select which day you want to program, and finally ENTER to choose that *Program Day*.

9. Master Mode (cont.)



- b. Each *Program Day* can have as many as 99 *Light Periods*. Select the *Light Period* you want to program by pressing ENTER to continue, then the UP and DOWN arrow keys to choose a period, and ENTER again to confirm your selection.



9. Master Mode (cont.)

c. Each Light Period has the following parameters:

- i. *Start Time* - The *Start Time* is always **12:00 AM for the first period**, or always the **previous Light Period's End Time +1 minute**. **You cannot change the Start Time directly. You can only change the Start Time by changing the previous Light Period's End Time.**



- ii. *End Time* - You can always change the *End Time* directly. If you set the *End Time* of **any Light Period** to **11:59 PM**, that *Light Period* will conclude the *Program Day*. **You cannot set the dimmer into Master Mode unless you have at least one complete Program Day in any Zone.** Set the *End Time* by pressing ENTER to continue, the LEFT and RIGHT arrow keys to select which digit you wish to change, the UP and DOWN arrow keys to change the selected digit, then ENTER to confirm your change.
- iii. *Intensity* - The *Intensity* is the brightness of the given Zone for that *Light Period*. You can change this by pressing the ENTER KEY to continue, the UP and DOWN arrow keys to change the *Intensity*, then ENTER to confirm your change. **You can change the Intensity more quickly by holding down the UP or DOWN arrow key.**

9. Master Mode (cont.)



iv. **Change Time** - The **Change Time** is the amount of time it takes for the dimmer to increase or decrease the **Intensity** from the previous **Light Period** to the current **Light Period**. This is given in **HH:MM**. You can change the **Change Time** just as you changed the **End Time** by pressing ENTER to continue, the LEFT and RIGHT arrow keys to select which digit you wish to change, the UP and DOWN arrow keys to change that digit, and then pressing ENTER to confirm.

d. Repeat Steps **a.** through **c.** for each **Light Period** until you have completed all **Program Days**.



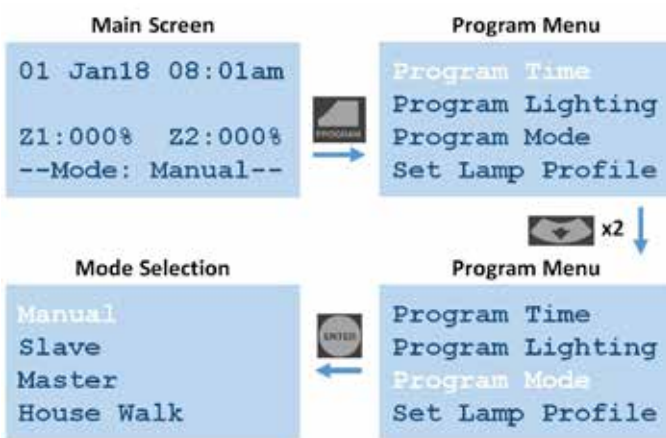
3. Once you have programmed Zone 1, you can copy this schedule to Zone 2 by selecting **Program Same**. If you do this, any program that was previously in Zone 2 will be erased! Otherwise, repeat Step 2. If you want to program Zone 2 differently.

4. **Erase Schedule!!** Can be used to delete your schedule and start over.

10. Setting the Mode

The dimmer is set to Manual Mode by default, but this can be changed by following these steps.

1. Press PROGRAM to go into the **Program Menu** and select **Program Mode** using the UP and DOWN arrow keys and ENTER.



2. Use the UP and DOWN arrow keys and ENTER to choose which mode you would like to use.

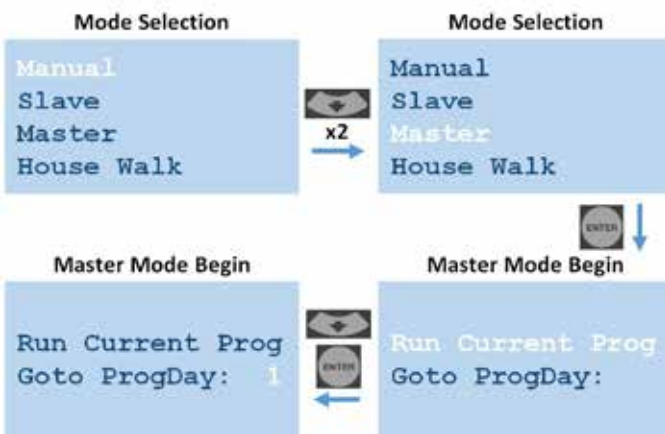
Setting to Master Mode

If you plan to use the onboard scheduling functionality of the dimmer using Master Mode, please make sure you have completed your lighting schedule by following the instructions in the section "Master Mode." Once you have done this, you can begin using this schedule by following these steps.

1. Press PROGRAM to go into the **Program Menu** and select **Program Mode** using the UP and DOWN arrow keys and ENTER. As done previously.
2. Use the DOWN and ENTER keys to select **Master**.
3. Press ENTER to run the schedule that was last programmed.

10. Setting the Mode (cont.)

4. If you wish to start your schedule on a day other than Program Day 1, you can use the DOWN and ENTER keys to select a *Program Day* that you want the dimmer to start on.



11. Housewalk Mode

The dimmer includes a House Walk Override feature that can be activated **at any time, from the Main Screen** by holding the ENTER key for a few seconds. The dimmer will then interrupt any 0-10V input, or schedule to run a House Walk.

HOUSE WALK
OVERRIDE

11. Housewalk Mode (cont.)

The dimmer will run at a specified *Walk Time*, *Intensity*, and will transition to that *Intensity* at a specified *Change Time*. These settings can be changed by completing the following steps.

1. Press PROGRAM to go into the **Program Menu** and select **Program Mode** using the UP and DOWN arrow keys and ENTER. As done previously.



2. Then select **House Walk** from the **Mode Selection** screen using the DOWN and ENTER keys.
3. Press ENTER to continue.
4. Change the Housewalk *Walk Time* by using the LEFT and RIGHT arrow keys to select the digit you wish to change, then the UP and DOWN arrow keys to change that digit, then press ENTER to continue.

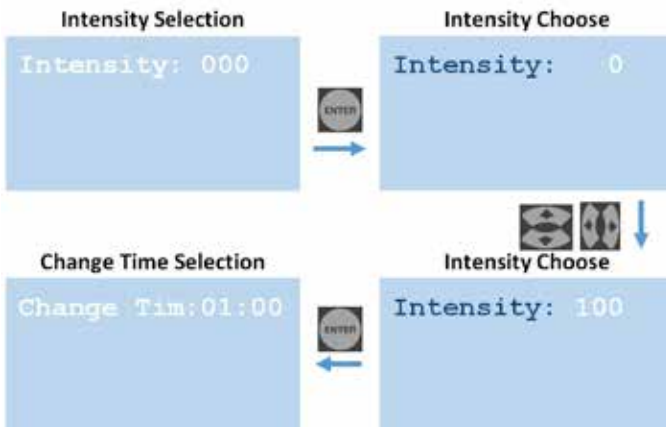


11. Housewalk Mode (cont.)

5. Change the House Walk **Intensity** by pressing ENTER to continue, then by using the UP or DOWN arrow keys to change the **Intensity**. You can change this more quickly by holding down the UP or DOWN arrow key.



6. Change the House Walk **Change Time** by pressing ENTER to continue, using the LEFT and RIGHT arrow keys to select the digit you wish to change, then the UP and DOWN arrow keys to change that digit, then press ENTER to continue.





*Thank you for purchasing the LifeLamp Dimmer.
Please visit www.lifelamp.net to see all of our other great LifeLamp products.*

9/2018